

FED. ROAD DIST. NO.	STATE	FED. AID PROJECT	FISCAL YEAR	SHEET NO.	TOTAL SHEETS
6	Ark.	S5014	1953		
JOB No.	10326			3	102

SCHEDULE OF BRIDGE QUANTITIES

BRIDGE NO.	CODE NO.	ITEM NO.		103	SP& 802	S. 103	SP& 804	SP-805-3	807	929	S.P.	
		ITEM	UNIT OF BRIDGE	DRY EXCAVATION FOR STRUCTURES	CLASS "B" CONCRETE FOR BRIDGES	REINFORCING STEEL	CONCRETE PILING 16" OCTAGONAL	STEEL PLATE GUARD RAIL (10 GA.)	STRUCTURAL STEEL IN BEAM SPANS	BRIDGE NAME PLATES TYPE "C"	REMOVAL OF EXISTING BRIDGE STRUCTURES	
				UNIT	CU. YD.	CU. YD.	LB.	LIN. FT.	LIN. FT.	LB.	EACH	COMPLETE ITEM
2884	X031	End Bent No. 1		38	9.98	1353	180	7.82	389	1		
		Intermediate Bents No. 2-5			20.68	3380	565					
		End Bent No. 6		38	9.98	1353	180	7.82	389			
		Five 30'-0" I-Beam Spans			88.48	15165		300.00	59825			
		Totals for Bridge No. 2884		76	129.12	21251	925	315.64	60633	1	6%	
2885	X031											
		End Bent No. 1		48	11.92	1440	280	9.06	442	1		
		Intermediate Bents No. 2-7			35.28	5436	1399					
		End Bent No. 8		48	11.92	1440	280	9.06	442			
		Seven 40'-0" I-Beam Spans			164.04	28452		560.00	153100			
Totals for Bridge No. 2885		96	223.16	36768	1959	578.12	153984	1	30%			
2886	X031											
		End Bent No. 1		40	10.53	1356	252	9.42	414	1		
		Intermediate Bents No. 2-5			22.56	3264	805					
		End Bent No. 6		38	10.53	1356	252	9.42	414			
		Five 30'-0" I-Beam Spans			88.60	15225		300.00	60275			
Totals for Bridge No. 2886		78	132.22	21201	1309	319.84	61103	1	64%			
Totals for Job No. 10326		250	484.50	77220	4193	1212.60	275720	3	100%			

SCHEDULE OF BRIDGE QUANTITIES BEASLEY - LEPANTO POINSETT COUNTY

ROUTE 143 SEC. 0

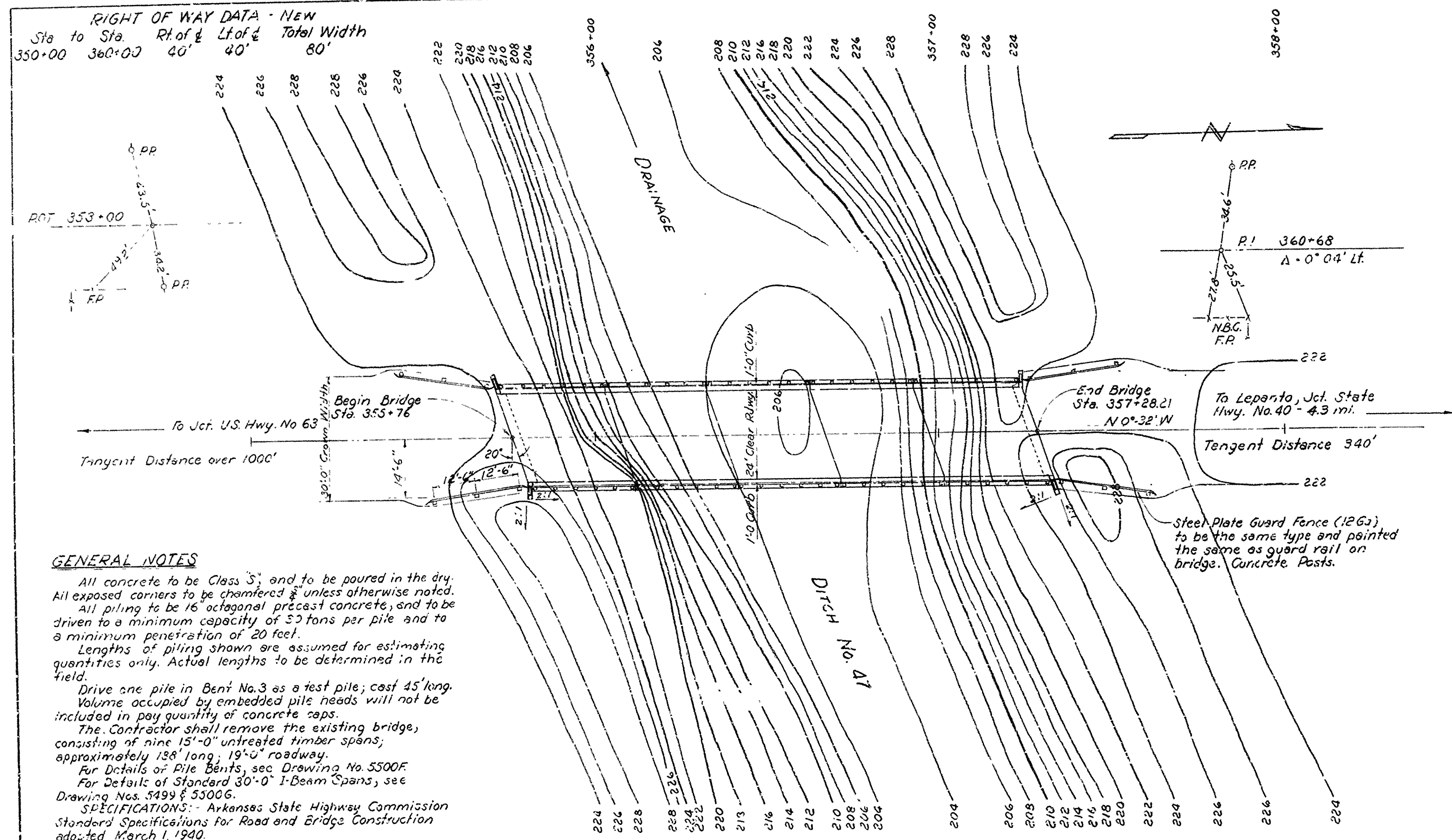
ARKANSAS STATE HIGHWAY COMMISSION
LITTLE ROCK, ARK.

Drawn By: J.E.H. Date: 8-25-53
Traced By: Date: _____
Checked By: Date: _____
Scale: _____
BRIDGE NO. 2884, 2885 DRAWING NO. 8768
2886

Revised
9-1-53 - H.B. Br. 2884.

Bridge Design Engineer

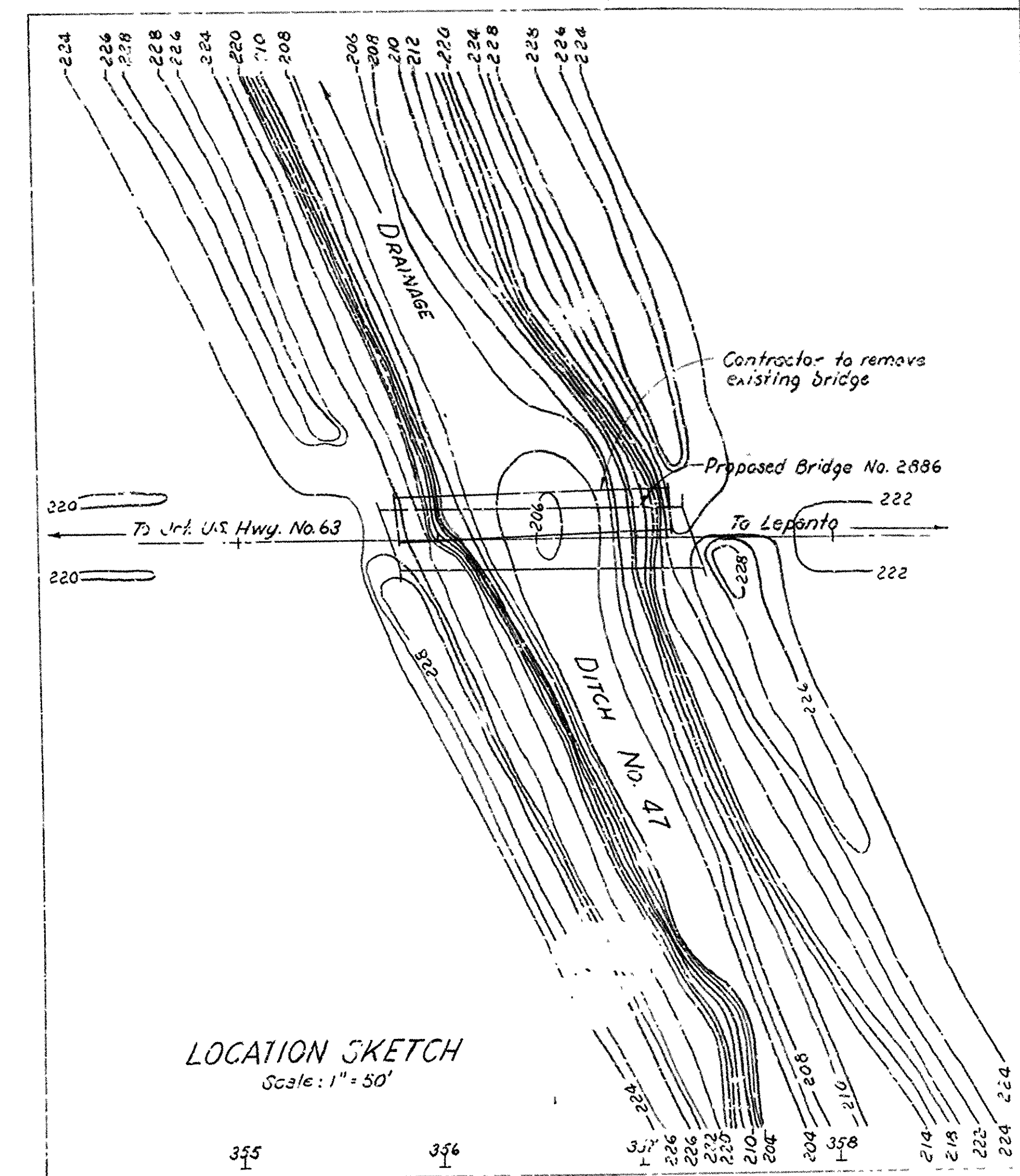
PLS. ROAD No.	STATE	FED. AID PROJECT	FISCAL YEAR	SHEET No.	TOTAL SHEETS
6	ARK.	S-50(4)	1953	25	102
JOB No. 10326					



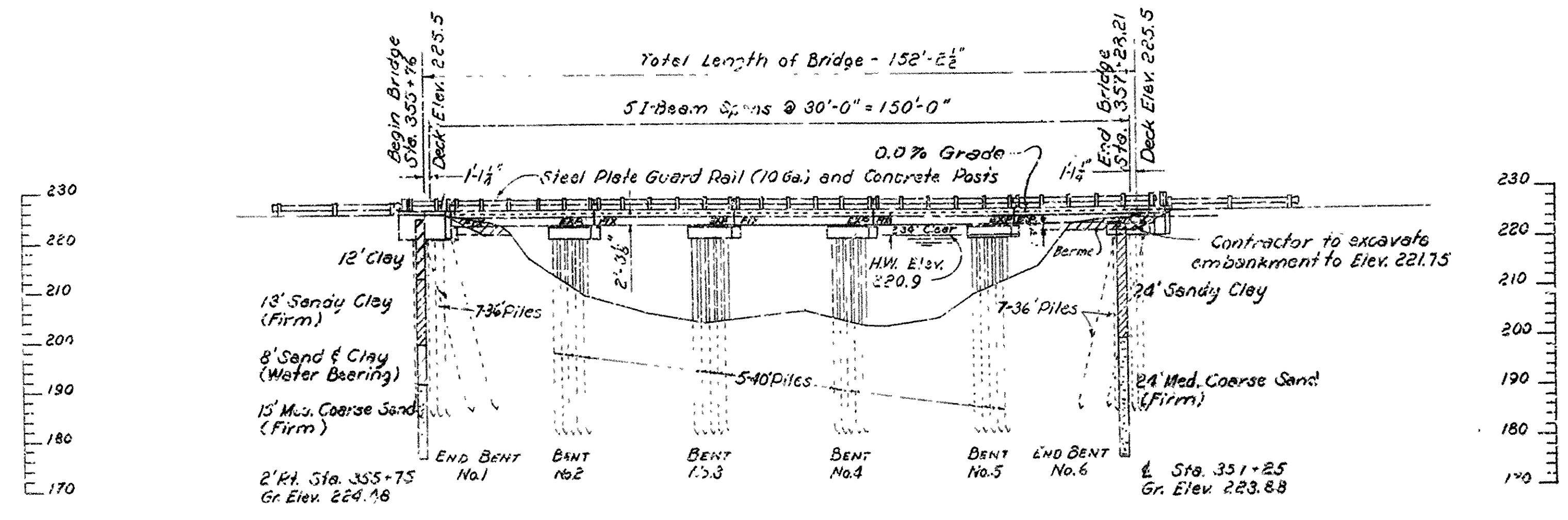
GENERAL NOTES

All concrete to be Class "S" and to be poured in the dry. All exposed corners to be chamfered & unless otherwise noted. All piling to be 16 octagonal precast concrete, and to be driven to a minimum capacity of 33 tons per pile and to a minimum penetration of 20 feet. Lengths of piling shown are assumed for estimating quantities only. Actual lengths to be determined in the field. Drive one pile in Bent No. 3 as a test pile; cost 45' long. Volume occupied by embedded pile heads will not be included in pay quantity of concrete caps. The Contractor shall remove the existing bridge, consisting of nine 15'-0" untreated timber spans, approximately 138' long, 19'-0" roadway. For Details of Pile Bents, see Drawing No. 5500F. For Details of Standard 30'-0" I-Beam Spans, see Drawing Nos. 3499 & 5500G. SPECIFICATIONS: Arkansas State Highway Commission Standard Specifications for Road and Bridge Construction adopted March 1, 1940.

PLAN



LOCATION SKETCH



ELEVATION

DESIGN SPECIFICATIONS AASHO. 1953

LIVE LOAD: 15 Loading
UNIT STRESSES:
Class "S" Concrete (n=10) 1200 psi
Reinforcing Steel (Int. Gr.) 20000 psi
Structural Steel 18000 psi

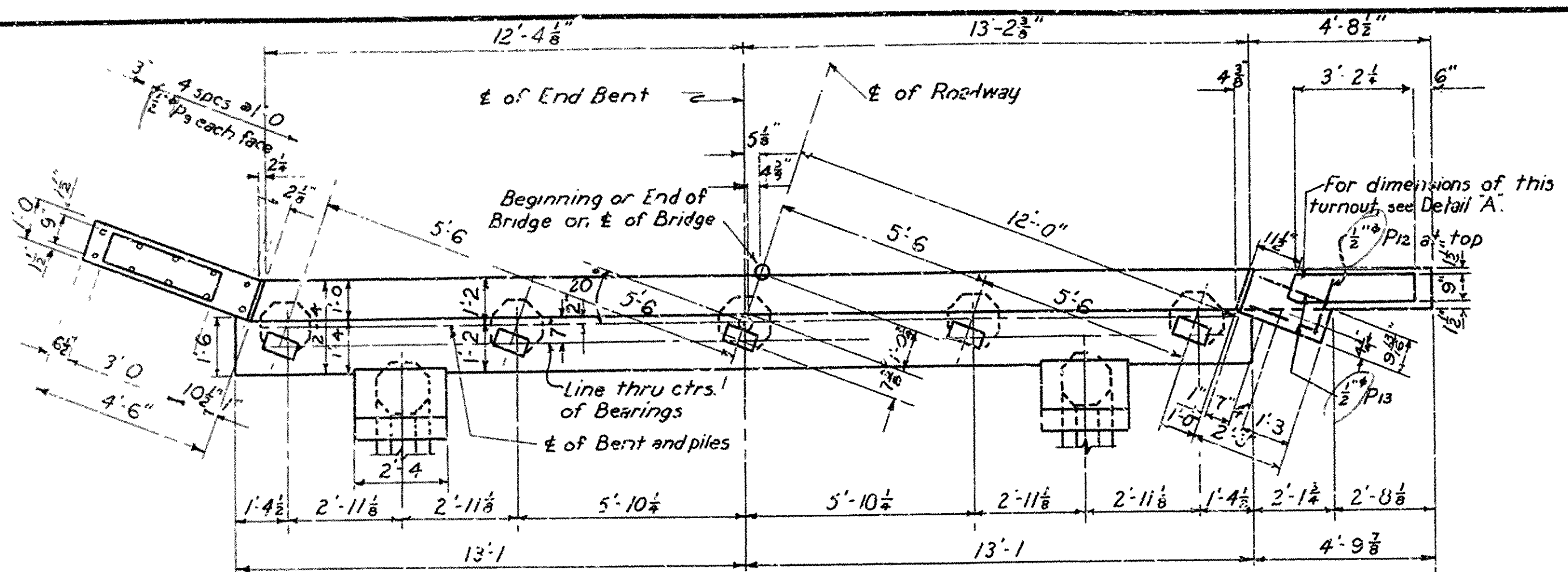
ITEM NO.	ITEM	QUANTITY	UNIT
103	Dry Excavation for Structures	78	Cu. Yd.
SP-602	Class "S" Concrete for Bridges	132.22	Cu. Yd.
SP-803	Reinforcing Steel	21201	Lb.
SP-804	Concrete Piling - 16" Octagonal	1309	Lin. Ft.
SP-805-3	Steel Plate Guard Rail (10 Ga.)	318.84	Lin. Ft.
807	Structural Steel in Beam Spans	61103	Lb.
SP-809	Bridge Name Plates (Type "C")	1	Each
SP-810	Removal of Existing Bridge Structures	64%	Complete Item

LAYOUT OF BRIDGE
OVER DRAINAGE DITCH NUMBER 47
BEASLEY-LEPANTO
POINSETT COUNTY
ROUTE 143 SEC. 0

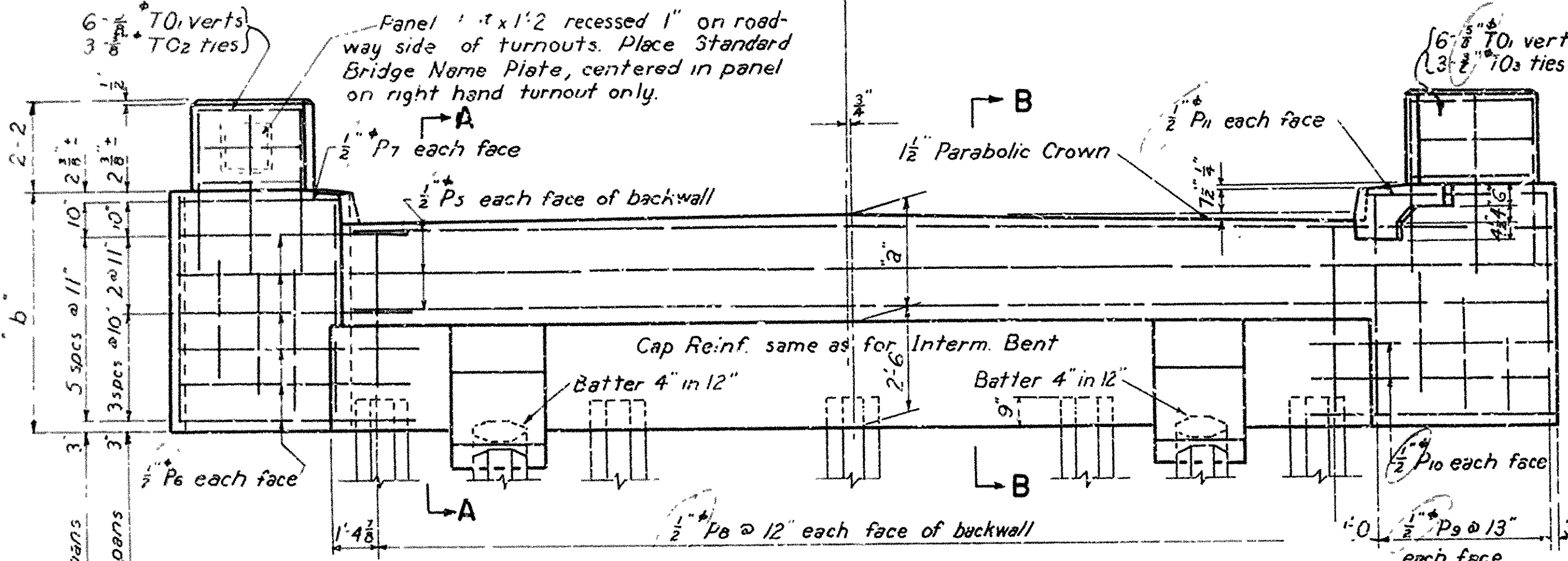
ARKANSAS STATE HIGHWAY COMMISSION
LITTLE ROCK, ARK.
Drawn By: D.S. Date: 5-12-53
Traced By: Date: 5-12-53
Checked By: Date: 10-2-53
BRIDGE No. 2886
DRAWING NO. 8371
Scale: 1" = 20'

Drainage Area
100 sq. mi.
C = 0.3
B.M. Elev. 225.46
M.T. Fellow Guard
3' Lk. Sta. 355+81

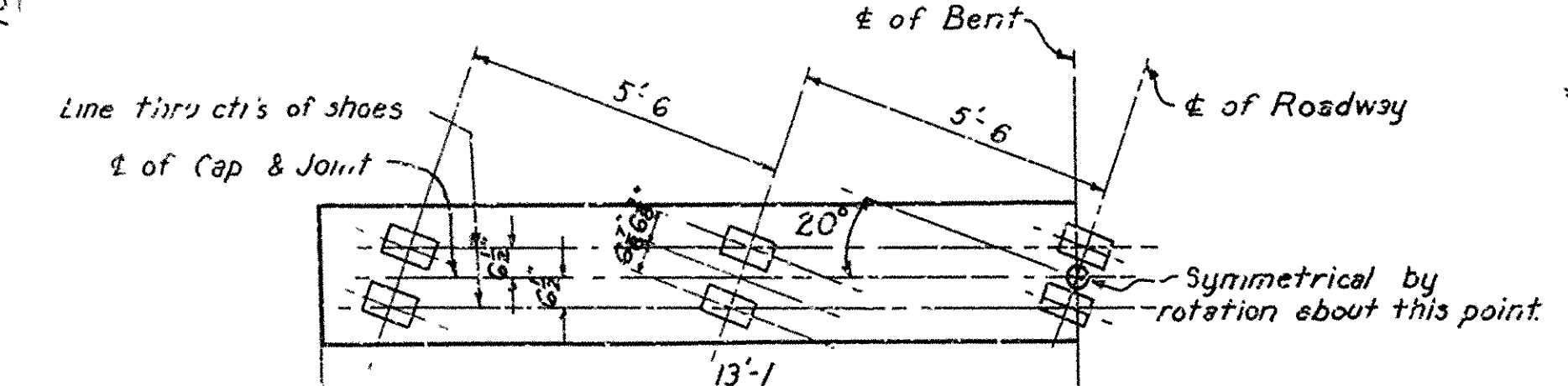
FED. ROAD DIST. NO.	STATE	PROJECT NO.	FISCAL YEAR	SHEET NO.	TOTAL SHEETS
0	ARK.				
STATE JOB NO.					



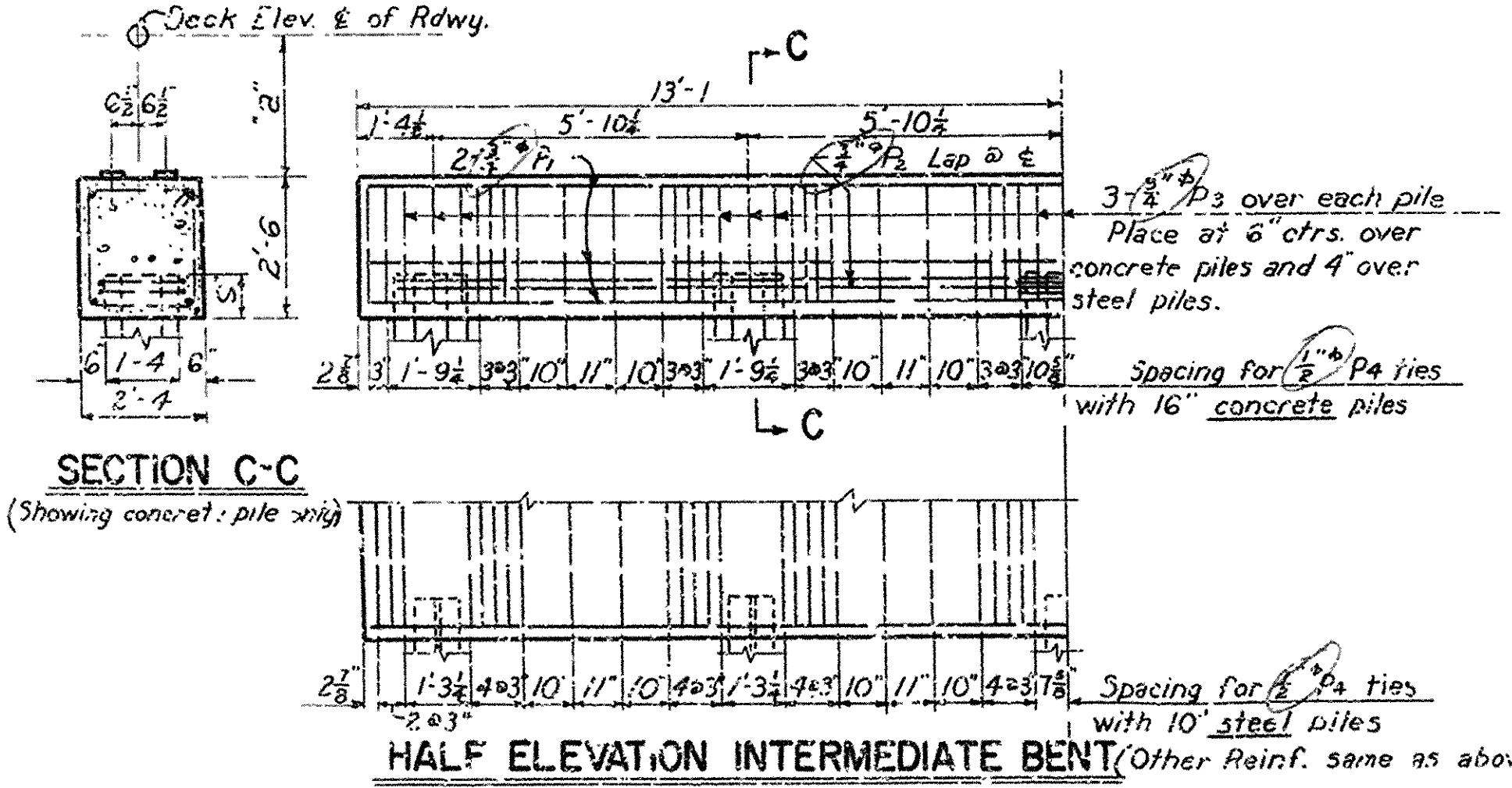
PLAN OF END BENT



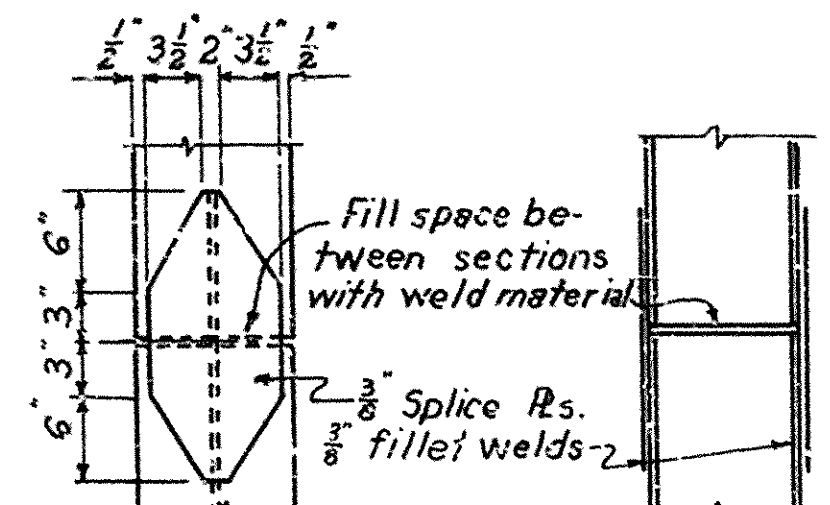
ELEVATION OF END BENT



HALF PLAN INTERMEDIATE BENT

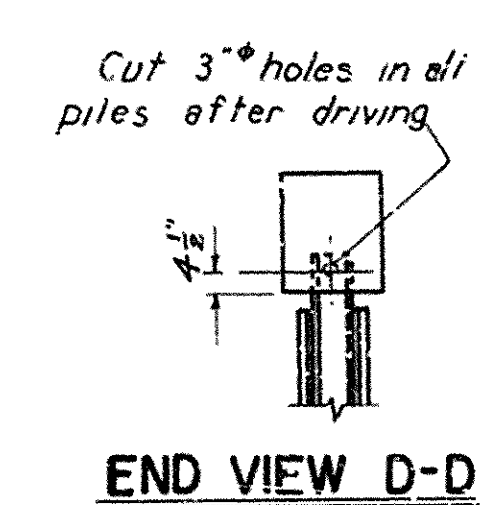


HALF ELEVATION INTERMEDIATE BENT (Other Reinf. same as above)

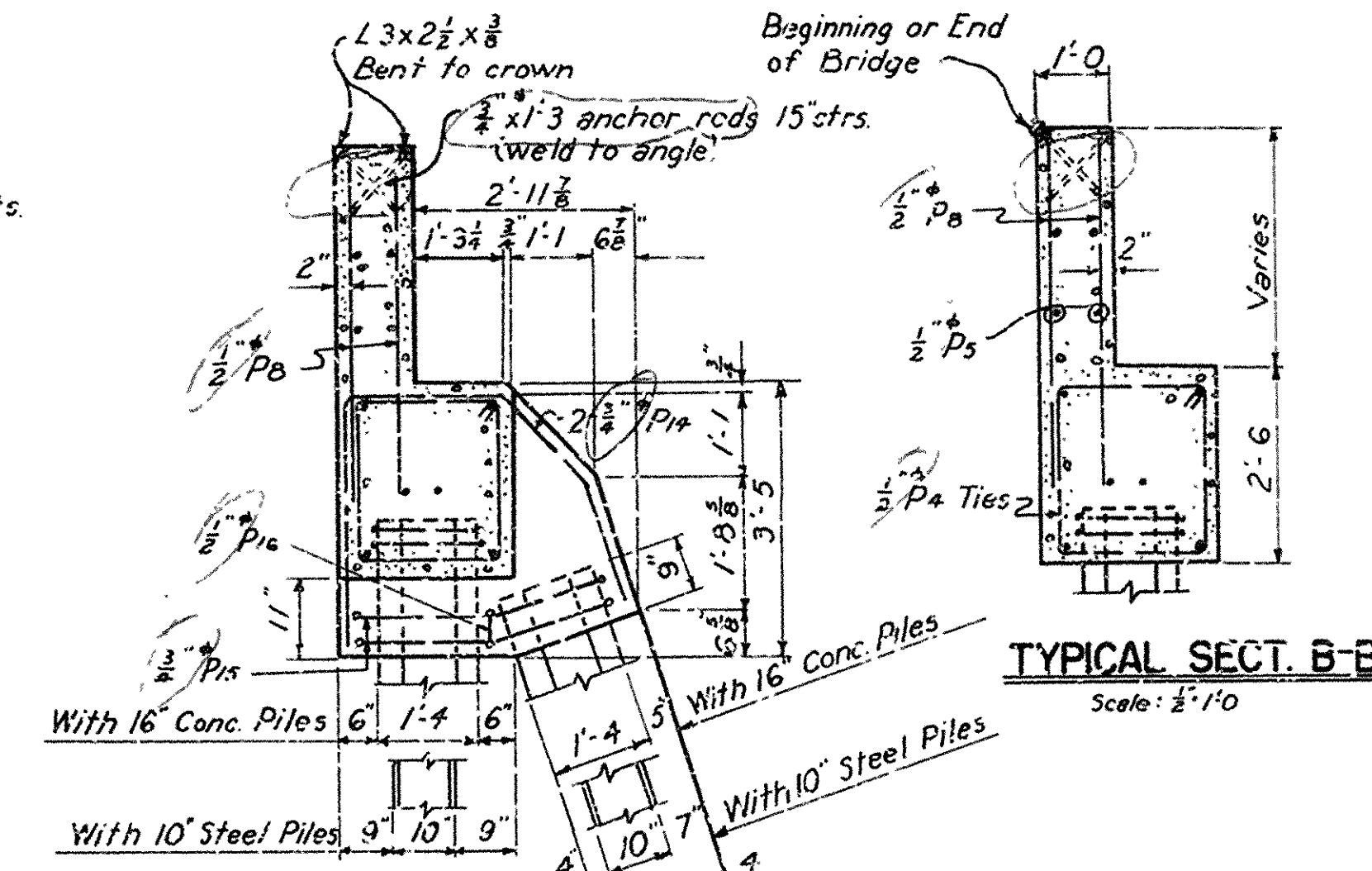


STEEL PILE SPICE DETAILS

Generally all piles shall be driven full length and shall not be spliced except by permission of the Engineer.

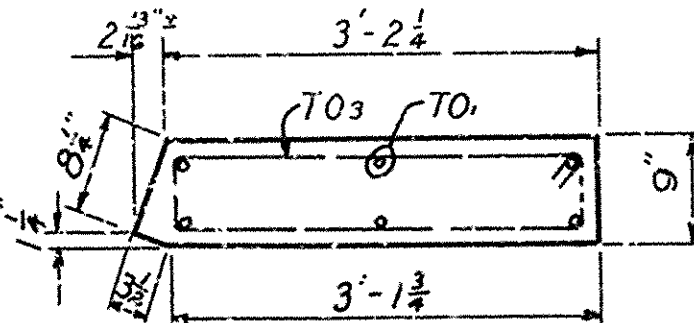


END VIEW D-D

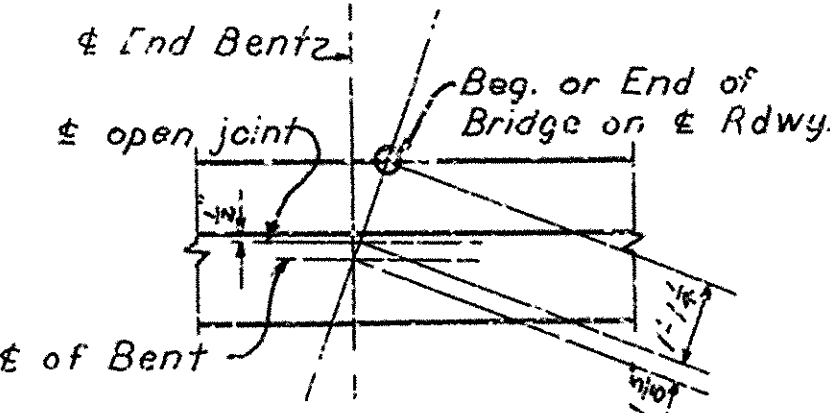


TYPICAL SECTION B-B

SECTION A-A AT BATTER PILES



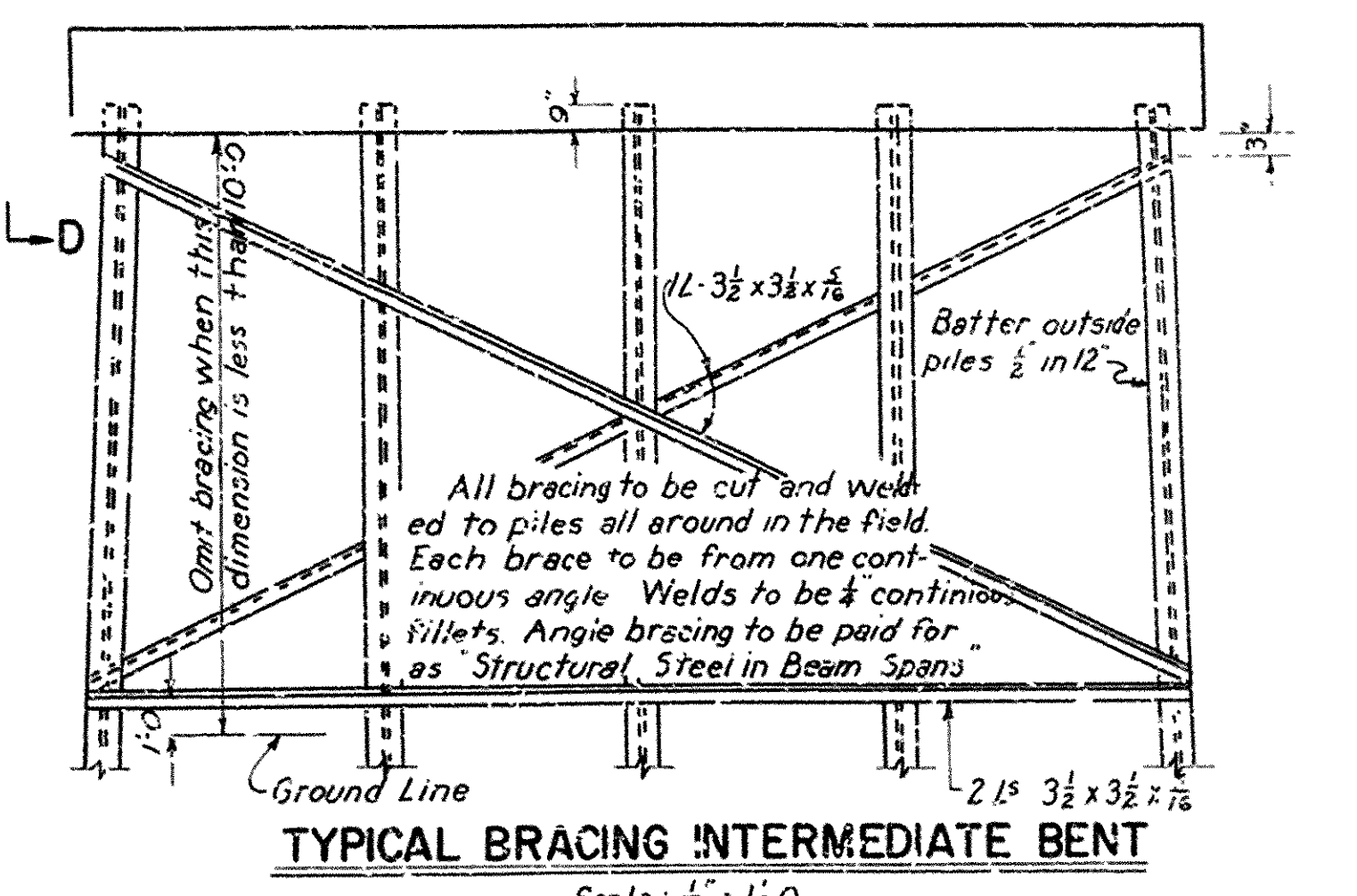
DETAIL 'A' LEFT HAND TURNOUT



DETAIL SHOWING DISTANCE FROM BEG. OF BRIDGE TO OPEN JT. ALONG E. RDWY.

LIST OF VARIABLES

Span	Vert. Dimensions
30'	2'-5 1/2" 5'-7 1/2"
31'	2'-5 1/2" 5'-7 1/2"
32'	" "
33'	2'-5 1/2" 5'-7 1/2"
34'	" "
35'	2'-8 1/2" 5'-10 1/2"
36'	" "
37'	" "
38'	2'-8 1/2" 5'-10 1/2"
39'	" "



TYPICAL BRACING INTERMEDIATE BENT

LIST OF REINFORCING STEEL

PK	Size	No. in Bents	Length	Bending Diagram
P1	3/4"	6	25'-10"	Str.
P2	"	4	28'-11"	
P3	"	15	6'-4"	
P4	1/2"	44	9'-1"	
P5	"	6	30'-4"	Str.
P6	"	12	6'-0"	
P7	"	2	4'-2"	Str.
P8	"	50	4'-0" for 30'-34' spans 4'-3" for 35'-39' "	3' Straight
P9	"	20	5'-3" for 30'-34' spans 5'-6" for 35'-39' "	
P10	"	6	6'-3"	Str.
P11	"	2	4'-6"	
P12	"	1	1'-6"	
P13	"	2	5'-0"	
P14	3/4"	4	8'-0"	
P15	"	4	11'-1"	
P16	1/2"	2	5'-5"	
TO1	5/8"	12	4'-0"	Str.
TO2	5/8"	3	7'-0"	
TO3	5/8"	3	7'-6"	

NOTES

Steel Piles are to be driven to refusal. Concrete Piles to be driven to a minimum capacity of 28 tons.
For details of Superstructure and for General Notes, see Dwg. 5499 for 30' to 34' spans and Dwg. 5500 for 35' to 39' spans.
Use type of Pile called for on Bridge Layout.

DETAILS OF
STANDARD PILE BENTS
30' TO 39' I-BEAM SPANS
24'-0" CLEAR RDWY. 1'-0" CURBS
20° SKEW RT. FORWARD

ARKANSAS STATE HIGHWAY COMMISSION
LITTLE ROCK, ARK.

Drawn By: WWM Date: 2-9-53
Traced By: KEC Date: 8-5-55 W.E.W. 8-19-55
Checked By: JHK Date: 2-25-53

DRAWING NO. 5500F

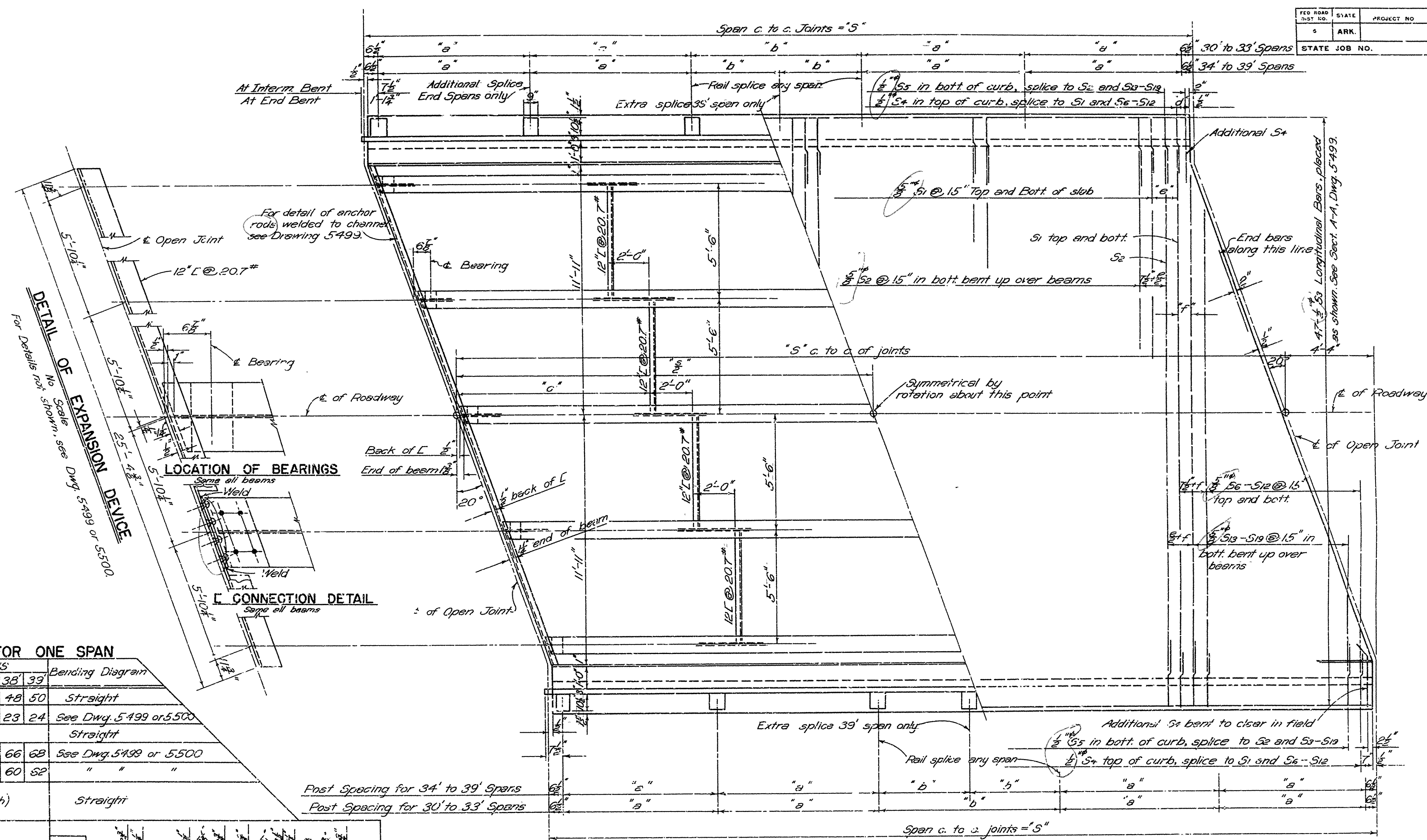
Revised Roadway & Curb Widths.
FDN 4-23-58

Reinf. Vertical Bars 8 # Lengths to 35' } Spiral #4 Wire
8 # Lengths 35' to 45' }

DETAILS OF 16" PRECAST CONCRETE PILE

No Scale

FED. ROAD DIST. NO.	STATE	PROJECT NO.	FISCAL YEAR	OBJECT NO.	TOTAL SHEETS
5	ARK.				
STATE JOB NO.					



LIST OF REINFORCING STEEL FOR ONE SPAN

Mark	Size	Length	NO. REQUIRED WHEN "S" IS										Bending Diagram
			30'	31'	32'	33'	34'	35'	36'	37'	38'	39'	
S1	5/8"	25'-0"	37	36	38	40	42	44	44	46	48	50	Straight
S2	"	25'-11"	16	17	18	19	20	21	21	22	23	24	See Dwg. 5499 or 5500
S3	1 1/8"	3'-6"	47										Straight
S4	"	4'-4"	52	54	56	58	60	62	62	64	66	68	See Dwg. 5499 or 5500
S5	"	3'-0"	46	48	50	52	54	56	56	58	60	62	" " "
S6 to S12	5/8"	22'-3" to 1'-9"	23 (4 each length) (Varies by 3'-5")										Straight
S13	5/8"	2'-1 1/2"	2										1'-9 1/2"
S14	"	2'-4"	2										10 1/2"
S15	"	17'-9"	2										4"
S16	"	14'-1"	2										2'-4 1/2"
S17	"	10'-7"	2										1'-8"
S18	"	7'-0"	2										1'-2"
S19	"	3'-6"	2										4 1/2"
30' to 33' spans			34' to 39' spans										
PC1	5/8"	5'-5"	24										See Dwg. 5499 or 5500 (Not a pay item).
PC2	5/8"	2'-9"	36										

Dimensions are to ctrs. of bars.

TABLE OF VARIABLE DIMENSIONS

Span c. to c. of Jts "S"	Rigid W.	Post Spacing		Strut Spacing	Reinforcing Spacing				Camber
		"a"	"b"		"d"	"e"	"f"	"x"	
30'	21WF62	5'-9"	5'-11"	6'-6"	7 1/2"	1'-3"	7"	8"	
31'	21WF62	5'-11"	6'-3"	6'-9"	7"	1'-2"	6 1/2"	8"	
32'	"	6'-2"	6'-3"	7'-0"	6 1/2"	1'-1"	6"	7 1/2"	
33'	21WF73	6'-2 1/2"	7'-1"	7'-3"	5"	1'-1"	4 1/2"	7 1/2"	
34'	"	5'-5"	5'-7 1/2"	7'-6"	5"	11 1/2"	4 1/2"	7 1/2"	
35'	21WF76	5'-7"	5'-9 1/2"	7'-9"	5"	10"	4 1/2"	7 1/2"	
36'	"	5'-9"	5'-11 1/2"	8'-0"	7"	1'-2"	6 1/2"	7 1/2"	
37'	"	5'-11"	6'-1 1/2"	8'-3"	6 1/2"	1'-1"	6"	7 1/2"	
38'	21WF84	6'-2"	6'-4 1/2"	8'-5"	5"	1'-1"	4 1/2"	7 1/2"	
39'	"	6'-2 1/2"	6'-6 1/2"	8'-9"	5"	11 1/2"	4 1/2"	7 1/2"	

PLAN FOR 30' TO 39' SPANS

Scale 3/8" = 1'-0"

NOTES

See Sec. P.D. 11.10.1. For details not shown and General Notes, see Drawing No. 5499 for 30' to 34' spans and Dwg. 5500 for 35' to 39' spans. For details of bents, see Drawing 5500F. *use bar anch. for 30' to 34' spans. 1/2" lap. dev. 1/2" for details of bents.*

DETAILS OF STANDARD
30' TO 39' I BEAM SPANS
24'-0" CLEAR RDWY. 1'-0" CURBS
20° SKEW RT. FORWARD

ARKANSAS STATE HIGHWAY COMMISSION
LITTLE ROCK, ARK.

Drawn By: W.W.M. Date: 2-2-53
Traced By: L.W.H. Date: 3-3-53 Chkd WFW
Checked By: J.H.K. Date: 2-20-53 8-18-55

Ward
BRIDGE DESIGN ENGINEER

DRAWING No. 5500F